



SELF MAKE-UP SPECIAL MATURE SKINS

With time, the face changes: the skin is drier and finer, there is a lack of elasticity, firmness and shine, the appearance of marks, wrinkles and fine lines, etc. Mature skins present particularities, so they need adapted make-up. Make-up is therefore an essential ally thanks to which you will be able to bring out the best in yourself.

Come and learn the techniques of the professionals and make make-up your daily ally!

Concerned public

Mature women whose skin and face have changed, who wish to learn how to adapt their make-up and acquire the techniques and learn the advice and tricks of pros.

Pre-requirement

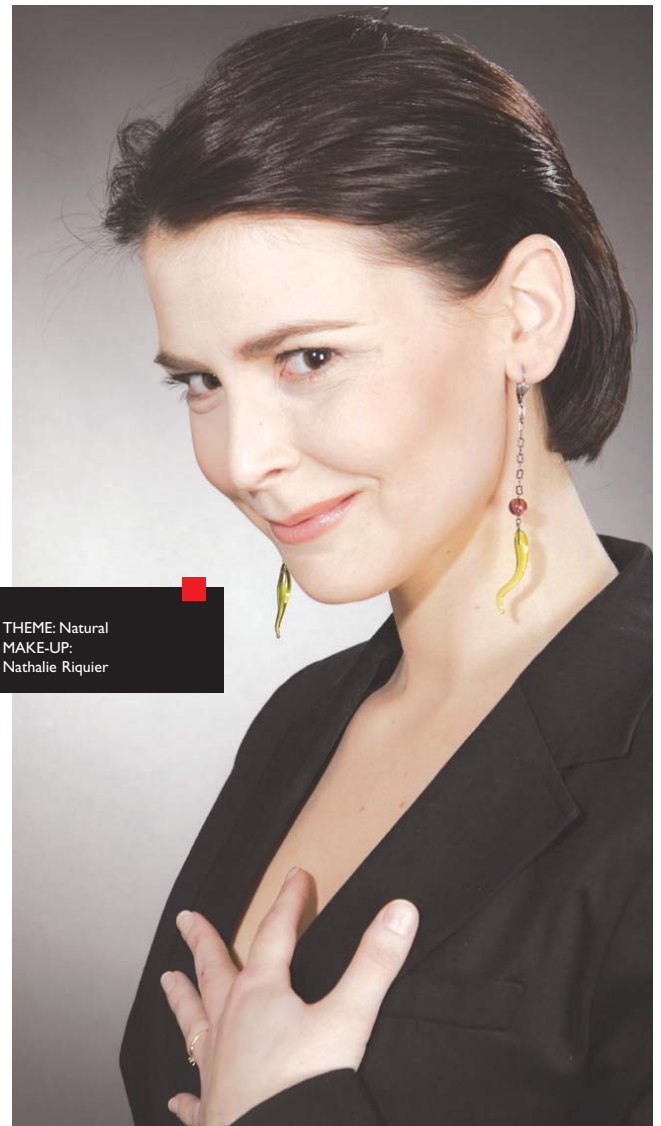
None

Objective

- To acquire the knowledge and the basic techniques of make-up.
- To become accustomed to and know how to use the make-up products.
- To learn to bring out the best in your physical characteristics thanks to make-up.
- To learn how to adapt your make up to circumstances (private or professional).

Duration

2 independent modules, each lasting 4 hours , that is to say 8 hours in total.



THEME: Natural
MAKE-UP:
Nathalie Riquier

Program

• Module 1

A mature skin prepared for the day!

- 1) The specificities of mature skins:
 - Definition and particularities,
 - Types of wrinkles and language of wrinkles,
 - Products, equipment and adapted practices.
- 2) Demonstration and creation of self of a day make-up:
 - How to do a natural day make-up,
 - How to do a high quality day make-up.
- 3) Tips and tricks for day make-up:
 - Pro advice just for you.
 - How do I evolve a day make-up into an evening make-up?

• Module 2

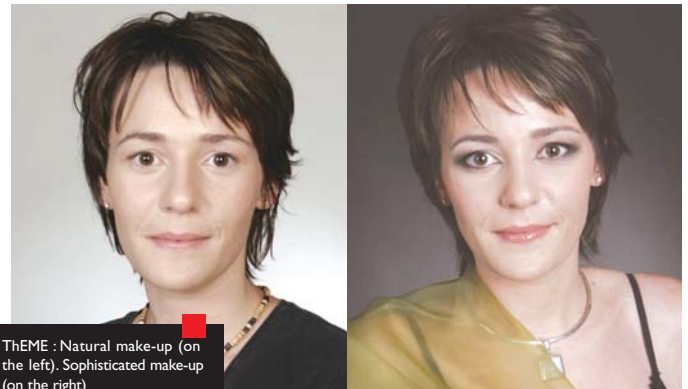
**A mature skin prepared for the evening!
(It is recommended you have already done module 1 to attend this module)**

- 1) How do I do a sophisticated evening make-up?
- 2) How do I do an evening make-up for a special event?
- 3) How do I do a party make-up?

Equipment made available

- Viséart: make-up base.
- Numeric Proof (France): palette of correctors, sticks and fluid foundations, loose powders, compact powders, palette of dry paints, base, make-up remover, palette of lipsticks, false lashes and glitter).
Brushes and sponges.
- Mascaras, eyebrow and mouth pencils, blushes Ben Nye (USA).

The products and equipment are supplied to the participants during the first module they participate in. At the end of this first module, the brushes and sponges (worth 41.80 Euros) remain their property and will be used in the following modules they participate in.



THEME : Natural make-up (on the left). Sophisticated make-up (on the right)
MAKE-UP: Tiffany Gilles

Price

90 Euros per module.
In the case of direct access to module 2, there is an extra charge of 41.80 Euros for the module.

Group size

12 people maximum

Trainer

Professional make-up artist

Customized training programs can be organized on request.
Contact Florence CAPEL at 00 33 (0) 1 44 08 11 48



ITM - 9, rue des Arènes de Lutèce - 75005 Paris FRANCE - ☎ 00 33 (0) 1 44 08 11 44 - www.itmparis.com

REGISTRATION FORM

Les Ateliers

MAQUILLAGE & CRÉATION ITM



Surname: _____ First name: _____
 Address: _____
 Postal code: _____ Town: _____
 Date of birth: _____
 Telephone: _____
 E-mail: _____
 Profession: _____
 Level of studies (if student): _____



Company (if workshop is attended in professional framework): _____

Company address: _____

Contact: _____

Telephone: _____

TITLE: _____

Module(s) (if applicable): _____

Desired dates: _____

PAYMENT

Full payment for the workshop is to be made in advance, by check made out to ITM. You will receive confirmation of your registration upon reception of this payment.

CANCELLATION CONDITIONS

In the case of the cancellation of registration notified by registered letter with acknowledgement of receipt 15 days before the commencement of the workshop, your payment will be fully reimbursed by check. Beyond this 15 day limit, the totality of the payment will be acquired definitively by ITM.

REGISTRATION FORM TO BE RETURNED TO: ITM PARIS - 9, RUE DES ARÈNES DE LUTÈCE - 75005 PARIS, FRANCE